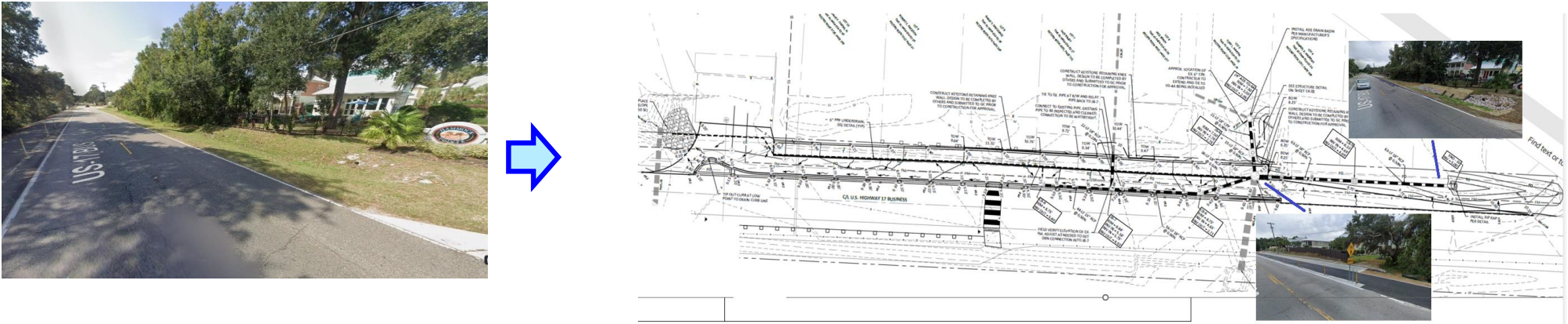


Success Measures

Parking lot Improvements: <i>Success Measure:</i> Increased parking capacity, improved parking lot organization, and enhanced safety for both vehicles and pedestrians.		
1	Before	After
	<ul style="list-style-type: none">* Small parking lot without designated spaces and gravel paving.* Inappropriate parking on private or business property* Unsuitable walking conditions to the bike path users	<ul style="list-style-type: none">* Asphalt Paving: Replacing old gravel with durable asphalt, enhancing safety, durability, and aesthetics.* 13 Properly Marked Parking Spaces: Clear, organized, and efficient use of space with appropriate line markings.* Traffic Control Signage: Proper placement of signs ensuring smooth and safe traffic flow.* Conflict Reduction: Addressing unsafe and illegal parking to minimize disruptions with nearby homeowners & businesses* Congestion Alleviation: Enhancing access and safety for citizens using the bike path



Stormwater Drainage System: <i>Success Measure:</i> Improved stormwater drainage, reduction in water pooling, and minimized risk of parking lot damage due to water-related issues.		
2	Before	After
	No efficient drainage system in place.	<ul style="list-style-type: none">* Installed 271 ft of 18" RCP (Reinforced Concrete Pipe) and 44 ft of 15" RCP.* Constructed & connected 6 Junction Boxes/Catch Basins: Effectively capturing and channeling stormwater to prevent flooding.* Installed Pervious Concrete: Enhancing permeability to support sustainable stormwater management.



Aesthetic and Functional Upgrades: <i>Success Measure:</i> Improved user satisfaction with the facility and demonstrated commitment to sustainability.		
3	<ul style="list-style-type: none">* Enhanced curb appeal through freshly paved asphalt and structured traffic management.* Proper signage and lane separations improving the overall navigation experience for drivers.* Pervious concrete provides a clean, modern look with a smooth, uniform surface that enhances the visual appeal of the parking lot and reducing runoff.	

Additional Metrics:		
4	<ul style="list-style-type: none">* Cost-Efficiency: Completion of the project within budget.* Safety Enhancements: Reduction in incidents caused by inadequate traffic control or water pooling.* User Feedback: Positive responses from users about the improvements.* Tourist Attractive Spot: The scenic views of the Murrells Inlet marsh create an inviting atmosphere, making it the perfect stop for tourists looking to relax and take in the beauty of nature before heading to nearby attractions; This modern parking facility not only meets practical needs but also enhances the overall tourist experience.	

At least one success measure is required. If additional lines are needed, copy and paste Measure 15.

